

2021 E-PROGRAM



USING CREATIVITY TO MAKE
TEACHING SUSTAINABILITY FUN

**[PY]
[IA]** PICTURE YOU
IN AGRICULTURE

THERE'S A RADICAL – AND WONDERFUL – NEW IDEA HERE...

THAT ALL CHILDREN COULD AND SHOULD BE INVENTORS OF THEIR OWN THEORIES, CRITICS OF OTHER PEOPLE'S IDEAS, ANALYZERS OF EVIDENCE, AND MAKERS OF THEIR OWN PERSONAL MARKS ON THE WORLD.

IT'S AN IDEA WITH REVOLUTIONARY IMPLICATIONS. IF WE TAKE IT SERIOUSLY."

— DEBORAH MEIER



CONTENTS

5	INTRODUCTION	10	WHO YOU WILL BE WORKING WITH
5	BACKGROUND	10	YOUR KOALA IS COMING
6	UNITED NATIONS GLOBAL SUSTAINABILITY GOALS	11	THE CHALLENGE SNAPSHOT
7	KREATIVE KOALAS SUSTAINABLE DEVELOPMENT GOALS	12	THE CHALLENGE IN DEPTH
8	INTENDED OUTCOMES HIERARCHY	14	CELEBRATION & RECOGNITION AWARDS AND EXHIBITION DAY
9	HOW DOES IT WORK?	14	KOALAS ON PUBLIC DISPLAY
9	MOBILISING YOUR SCHOOL TEAM		
9	TIMELINE		
9	CURRICULUM CONNECTIONS		

ONE OF THE GREAT LIABILITIES OF HISTORY IS THAT ALL TOO MANY PEOPLE FAIL TO REMAIN AWAKE THROUGH GREAT PERIODS OF SOCIAL CHANGE. EVERY SOCIETY HAS ITS PROTECTORS OF STATUS QUO AND ITS FRATERNITIES OF THE INDIFFERENT WHO ARE NOTORIOUS FOR SLEEPING THROUGH REVOLUTIONS. TODAY, OUR VERY SURVIVAL DEPENDS ON OUR ABILITY TO STAY AWAKE, TO ADJUST TO NEW IDEAS, TO REMAIN VIGILANT AND TO FACE THE CHALLENGE OF CHANGE."

— REV. DR. MARTIN LUTHER KING, JR.

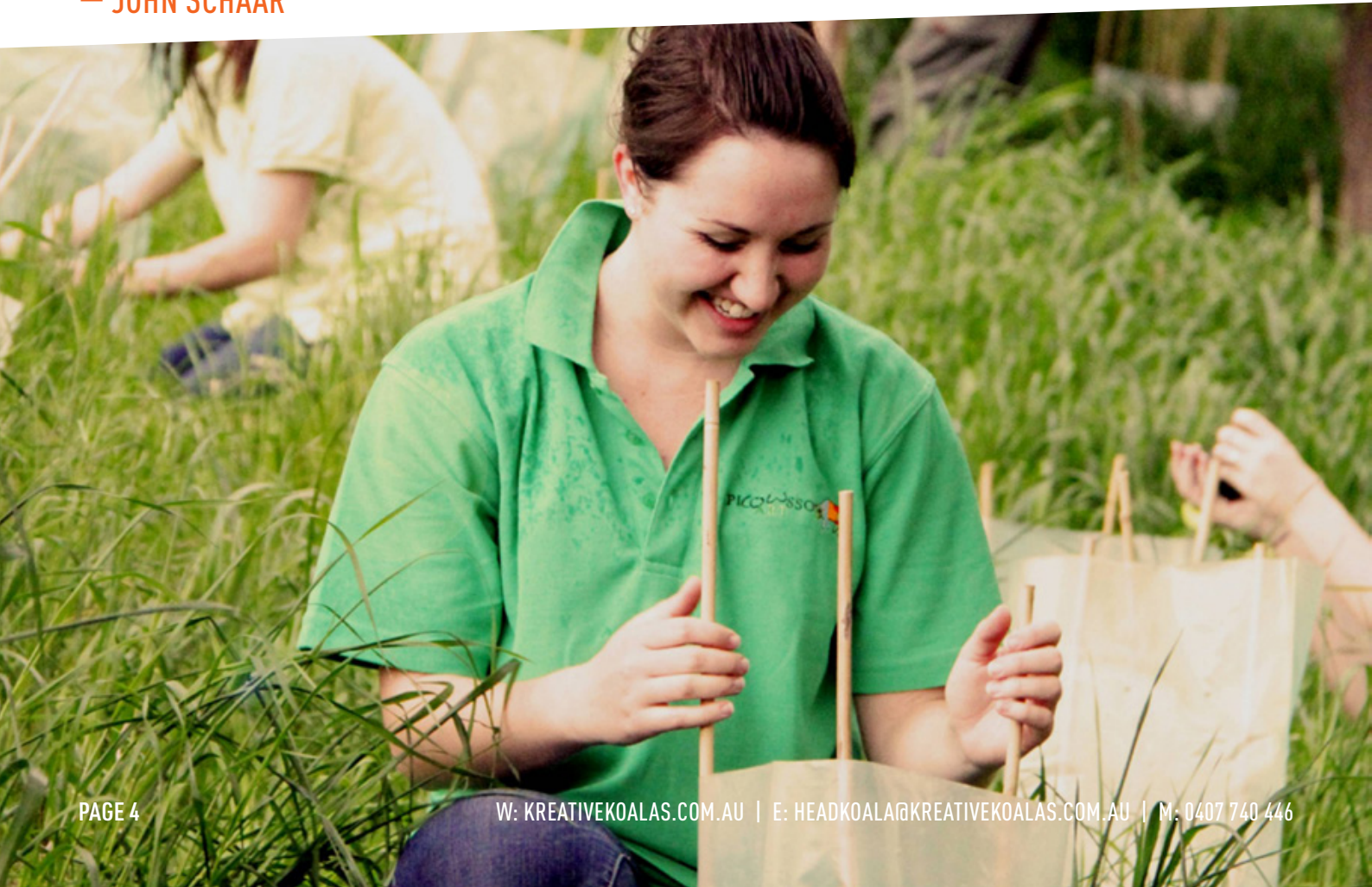


THE FUTURE IS NOT SOME PLACE WE ARE GOING TO, BUT ONE WE ARE CREATING.

THE PATHS ARE NOT TO BE FOUND BUT MADE.

THE ACTIVITY OF MAKING THEM CHANGES BOTH THE MAKER AND THE DESTINATION”

— JOHN SCHAAAR



INTRODUCTION

KREATIVE KOALAS IS A GROUND-BREAKING SCHOOLS BASED PROJECT LEARNING INITIATIVE FROM PICTURE YOU IN AGRICULTURE.

“THIS INNOVATIVE AND FUN PROGRAM PROVIDES STUDENTS AND TEACHERS WITH OPPORTUNITIES TO ENGAGE IN GENUINE EXPERIENCES AND GAIN KNOWLEDGE AND SKILLS ABOUT THE ENVIRONMENT THEY LIVE IN.”

The 2021 program will involve twenty primary schools.

Linked to the United Nations Global Goals for Sustainable Development, Kreative Koalas provides an avenue for students to discover and learn about sustainability issues such as climate change, threatened species, healthy landscapes, affordable clean energy and food security. Participating schools will be supported to create a community project and to present their ideas as artwork on a giant fibreglass koala. The kreative Koala will then be entered in a regional art competition.

This program provides the opportunity for students to be part of a team that welcomes their ideas and solutions and empowers them to act on global sustainability challenges at a local level as individuals, as a community and as the future decision makers for the planet.

The program has been designed and developed to connect and empower the community like nothing before. We connect students to Community Champions, Young Farming Champions, mentors, business and community groups to facilitate intergenerational connections, collaboration, knowledge sharing and communication to achieve high-impact long-lasting outcomes.

BACKGROUND

Young people are in a unique position as they face the reality of an uncertain future but potentially they are best-placed to push for and define the long-term response to the planet they envision. They are also the most vulnerable to the legacy of decisions made by older generations. Although young adults arguably have the most to gain and the most to lose their voices are not prominent, and too often engagement with this crucial demographic is in many ways limited. Kreative Koalas seeks to enable and empower students to make decisions and take actions that contribute to creating a sustainable future.

‘SUSTAINABILITY ACTION IS BOTH A PREFERRED PEDAGOGICAL APPROACH FOR TEACHING SUSTAINABILITY AND AN ESSENTIAL SET OF KNOWLEDGE AND SKILLS FOR STUDENTS TO LEARN.

THIS LEARNING IS BEST DELIVERED THROUGH A WIDE RANGE OF TEACHING AND LEARNING ACTIVITIES UTILISING ALL THE KEY LEARNING AREAS. STUDENTS DEVELOP STRONG ENVIRONMENTAL KNOWLEDGE, AWARENESS AND CAPACITY FOR POSITIVE ENVIRONMENTAL CHANGE WHEN IT IS CONTEXTUALISED OR TAUGHT USING REAL EXAMPLES, PROBLEM SOLVING AND WITH ACTIVE STUDENT PARTICIPATION’. [SOURCE](#)

Educators agree the concepts relating to sustainability are complex and require careful sequencing throughout schooling. The Australian curriculum builds knowledge and understandings on these topics progressively from primary to senior secondary levels.

UNITED NATIONS GLOBAL SUSTAINABILITY GOALS

In September 2015 World Leaders committed to the Global Goals for Sustainable Development (SDGs). The 17 goals to achieve sustainability on a global scale by 2030 aim to end extreme poverty, fight inequality and injustice, and to fix climate change.



The SDGs offer the opportunity for a “win:win” for Australia: by promoting more sustainable development we can improve the quality of life and opportunity here in Australia while also promoting prosperity in the many developing countries. Whilst Australia has no difficulty in reaching many of the SDG targets we face major challenges in meeting the SDGs relating to sustainable energy (goal 7), sustainable consumption and production (goal 12), and climate change (goal 13).

Among other targets, these call for a doubling in the rate of improvement in energy efficiency (goal 7.3), implementing a 10-year framework on sustainable consumption and production (goal 12.1), and halving food waste by 2030 (goal 12.3). Australian households waste about 20% of the food they purchase per year – that’s an estimated 361 kg of food waste per person per year, so there is plenty of scope for improvement. This is vital for our economic future and security.

To realise these Goals there is overwhelming encouragement to engage communities and youth around the world to take action on one or more of these goals in whatever capacity they can. The United Nations is encouraging people and organisations already working towards these goals to work with youth and community, and empower them to act.

KREATIVE KOALAS SUSTAINABLE DEVELOPMENT GOALS

This project links its approach to ten of the United Nations Global Goals for Sustainable Development i.e. zero hunger, quality education, clean water and sanitation, affordable clean energy, sustainable cities and communities, responsible production and consumption, climate action, life below the water, life on land and partnerships.



Using local case studies and live interactions students are encouraged to appreciate the ways in which business, government and communities are actively addressing complex sustainability issues. Students will identify with the actions of their Community Champions and other young people across the globe as inspiration, to think about applying this to themselves. To test the effectiveness of this approach, our entry and exit surveys ask students whether they have heard of these sustainability issues, what they think they mean, and what actions they can take

on climate action; healthy landscapes, food security and sustainable cities and communities for Australians; and how we can transition to a low-carbon economy through adoption of renewable energy sources.

Our experience has shown us using the 'Power of Art' and 'Power of Youth in Action' the students will be able to understand the impact of their choices, have the capacity to make informed decisions and feel empowered to act to achieve social and environmental change.

WHY IS THIS IMPORTANT

In an era where young Australians have witnessed national disasters like drought, flood, fire and now COVID19 and concerns about the future of the planet, education for sustainability (EfS) can be empowering, and an antidote to a sense of helplessness. It equips students to act, individually and collectively, in ways that can contribute to sustainability. It provides the opportunity for students to explore and evaluate contested and emerging issues, gather evidence, and create solutions for a sustainable future.

EfS can enable students to become effective citizens and active change agents by helping them to deal with complexity and uncertainty. It can also help them to understand that there is rarely a single solution because new knowledge is continuously generated, and diverse viewpoints exist in society¹.

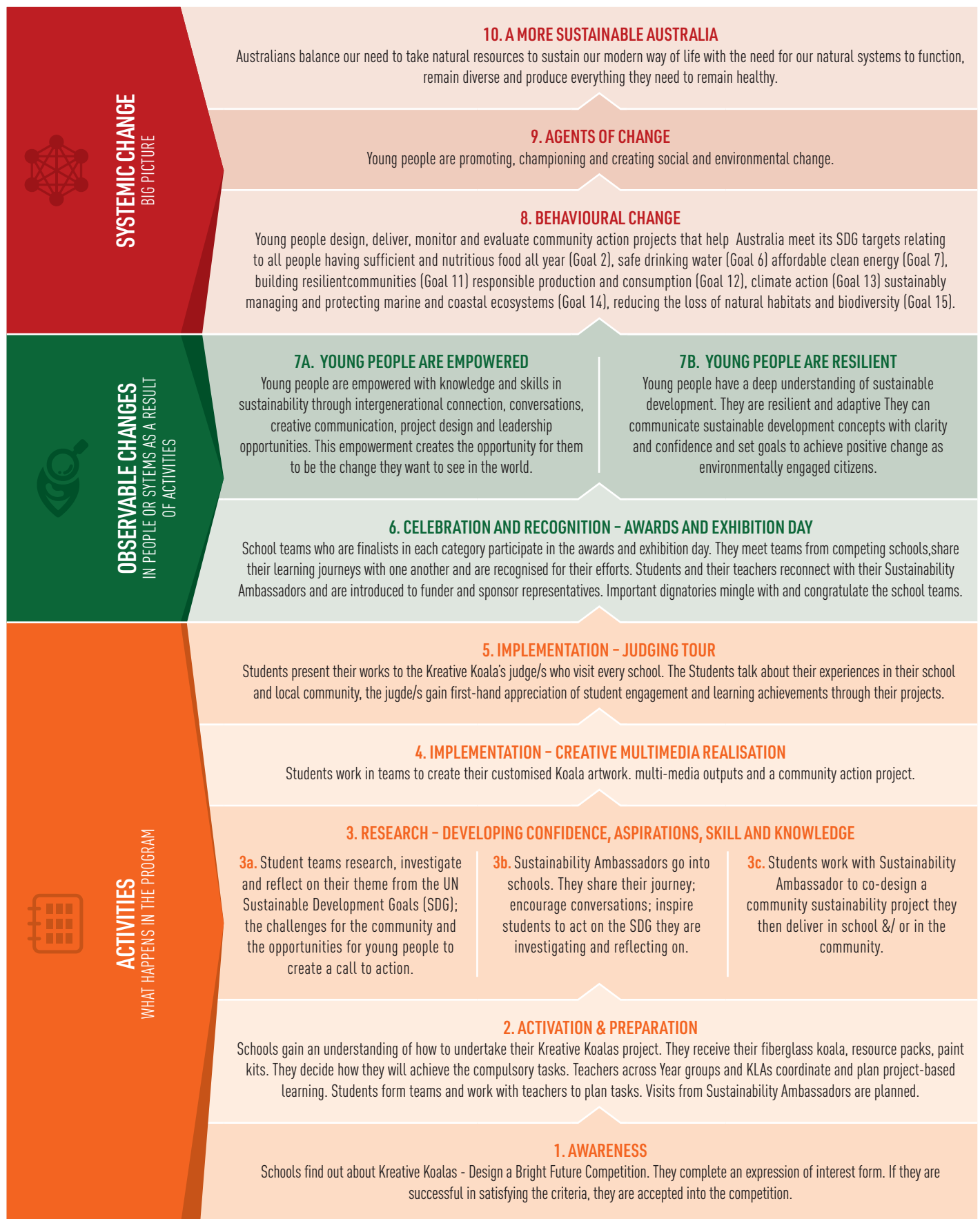
In summary, EfS means that students will be able to assess competing viewpoints, values and interests; manage uncertainty and risk; make connections between seemingly unrelated concepts, ideas and outcomes; and test evidence and propose creative solutions that lead to improved sustainability.

Our work with young people has shown them to be ambitious, creative, have a strong social conscience and capable of solving tomorrow's problems today.

Our programs support future influencers to tackle the tough challenges and thrive.

¹ Sustainability Curriculum Framework

INTENDED OUTCOMES HIERARCHY



HOW DOES IT WORK?

This is an integrated program which engages primary school students in sustainability awareness, understanding and action through art, design, creativity, teamwork and project development by:

- Providing a blank fibreglass koala for students to create an artwork on or to use as the subject of an artwork which focuses on a sustainable development goal.
- Pairing each school with an identified and trained Community Champion who will share their journey and engage with the students for the duration of the project.
- Supporting and empowering young people to co-create a project that they design, own and deliver either in-school or out in the community with their intergenerational mentors.

- Providing a vehicle for students to communicate what they learn in fun and creative ways to a broader online audience and their local community.
- Supplying an e-program with curricular connections.
- Supplying Matisse paints.

Each school is also provided with physical and web based resources to assist with learning outcomes and to complete the modules which make up this program.

PLEASE NOTE TO SUCCESSFULLY COMPLETE THE PROGRAM, MODULES 1 AND 2 MUST BE SUBMITTED.

MOBILISING YOUR SCHOOL TEAM

This exceptional program offers rich tasks with real world context and diverse support systems that draw upon the discipline expertise of teachers and community members working collaboratively to ensure connectedness to the world and the way it works.

The program encourages teachers to use their imagination and expertise and to work collaboratively with each other and the community. The outcomes are publicly accessible statements about the kinds of learnings that societies value and schools transmit.

You and your students will get the best experience through collaboration and team work.

The team can be from one class or a collection of students from different classes

We recommend:

- No less than two teachers and fifteen students undertake the project.
- Students actively show a desire to be part of the experience because they want to not because it has been allocated.
- Both students and teachers participating bring a diversity of skills sets to the team.

TIMELINE

15TH MAR	>	EXPRESSIONS OF INTEREST FORM DUE.
1ST APR	>	ENTRY SURVEYS DUE.
19TH APR	>	SUCCESSFUL SCHOOLS NOTIFIED.
26TH APR	>	PROGRAM COMMENCES.
17TH SEP	>	ENTRIES CLOSE.
TBC NOV	>	AWARDS & CELEBRATIONS.

CURRICULUM CONNECTIONS

This program ticks off on the curriculum in an easy-to digest, fun, community-focused and applied way! Access to experts and inspiring community members to help you every step of the way!

WHO YOU WILL BE WORKING WITH

YOU WILL BE WORKING WITH THE BEST OF THE BEST IN OUR COMMUNITY.

Your school will be allocated one Community Champion who will share their story, offer inspiration and work with you every step of the way to empower your school to be the change it wants to be.

MEET THE YOUNG FARMING CHAMPION

Where possible a Young Farming Champion (YFC) will also be paired with your school. The YFC will come to your school and talk to the students and share their farming experiences. The YFC will also be available over the internet to work with your students. We suggest that you use this opportunity to write about your YFC and their career journey in your Digital Learning Journal.



YOUR KOALA IS COMING

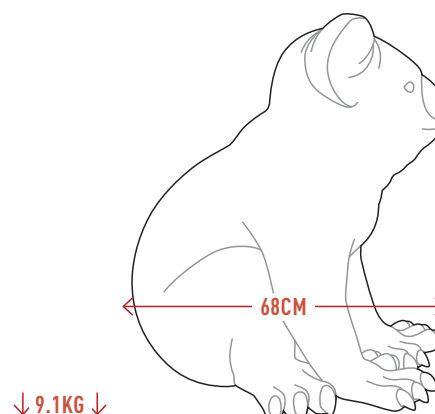
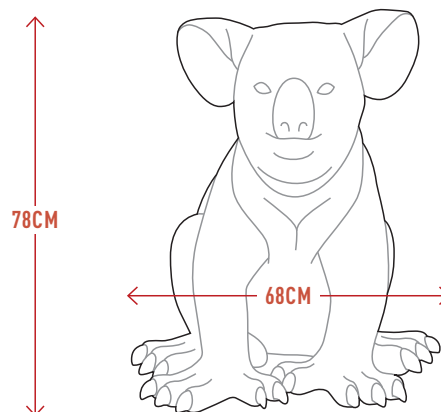
GETTING STARTED

Each school will be provided with a giant fibreglass Koala on which the students create an artwork that incorporates your identified Sustainable Development Goal (SDG) and why it is important to you, your family and the community. Your Community Champion will offer inspiration around this SDG as they will be representing this goal in the work they do.

Your artwork will be part of an exhibition so that your insights are passed on to the community.

TO PROVIDE YOU AND YOUR STUDENTS WITH BACKGROUND KNOWLEDGE AND INSPIRATION, WE WILL:

- Help you identify your community action project.
- Provide you with a Sustainability 101 Starter Kit.
- Provide you with a summary overview of the program to help you engage other teachers in your school.
- Send regular email newsletters that will provide in-depth background into each element of the program.



The Kreative Koalas program aims to be a highly motivational project, which caters for many learning styles and differences in student entry levels, encouraging the development of big ideas through co-operation and teamwork.

It's time to dust off the art box, put on your creative hat and turn your Koala into a story for change. Dig deep, get creative and go for the big ideas because it doesn't matter how old you are or how much you think you know; your Koala is going to take you on a journey of discovery.

Your Koala has climbed down from their tree and decided to roam free and that's exactly where you need to go. Immerse yourself in your sustainability goals and ask some tough questions about the future of the planet and what you see as possible.

Think:

1. What is the issue at hand?
2. What impact is it having?
3. What will our future look like if we do nothing?
4. What do we want our future to look like? / What future do we dream of?
5. What action can we take as a community to make this future a reality?

"A DREAM WRITTEN DOWN WITH A DATE BECOMES A GOAL. A GOAL BROKEN DOWN INTO STEPS BECOMES A PLAN. A PLAN BACKED BY ACTION MAKES YOUR DREAMS COME TRUE."

- GREG S REID

Crystallise those ideas, challenge our pre-conceptions and be original!

Your Koala wants to tell your sustainability story for change and needs your help. You're the designer, the creator, the artist and the presenter and your Koala is the messenger. When your Koala is ready, he/she is going to stand tall to tell the world about your creativity, your ingenuity and your big ideas and solutions for a brighter future.

Get thinking, get researching and get creative.

THE CHALLENGE SNAPSHOT

Participating in the Kreative Koalas competition involves completing two exciting modules.

1. THE KOALA

Use the blank fibreglass Koala and the Sustainable Development Goal you have identified to create an artwork.

2. COMMUNITY PROJECT

Working with your Community Champion and using the Sustainability Action Process (SAP) to support students to identify, investigate and take sustainability action, the students will co-design a local community project.

The Sustainability action process has five steps:

1. Making a case for change
2. Developing the scope
3. Defining the proposal
4. Implementing
5. Evaluating and reflecting

Your project offers your students the chance to turn great ideas into practical solutions.

The project can be in-school or out in the community.

Students will be empowered to decide what they want to do and what impact they want to have.

The following pages provide a full explanation of the two modules .

THE CHALLENGE IN DEPTH

PARTICIPATING IN THE KREATIVE KOALAS PROGRAM INVOLVES COMPLETING TWO MODULES.

MODULE 1: CREATE YOUR KOALA

For this module, there are three elements to submit

1. PAINTED KOALA

Each school will be provided with a giant fiberglass Koala on which the students create an artwork about their identified Sustainable Development Goal. A little flexibility - We recognise that many of the SDGs are linked and your students may have more than one passion! The students are free to incorporate another SDG/s in their artwork, but their identified SDG must be the central theme for their artwork and their artwork must reflect clearly how the other SDG/s they have featured are linked to their central SDG.

NOTE. You will be required to submit an artwork analysis with your Koala.

SO WHAT DO YOU HAVE TO DO?

Use the blank giant fibreglass Koala to inspire or create an artwork or design. Paint it, film it, project onto it, create an animation with it, drape it with things, photograph it, or create an installation or a sculpture. The possibilities are endless.....use the Koala as a canvas, film star, projection screen, billboard, hanger for wearable.....you decide. While the Koala will be an expression of student creativity, it will also communicate the team's awareness of, and strong messages and call to action on the identified Sustainable Development Goal. Remember, a major part of Kreative Koalas experience is students working together to develop big ideas. Your first ideas may not be your best ideas, and your final artwork will occur after much planning, designing, drawing, and discussing.

A separate 12-page Koala template booklet is provided to support the development of ideas, and to allow individual students to contribute to the final product. The link to the template booklet can be found [HERE](#). Templates will allow teams of students to plan and refine ideas through several drafts. Students can work in teams to complete each section or take on the whole Koala.

Students should apply a range of skills and processes to plan, develop, refine, make and present artwork, communicating awareness and understanding of issues learnt as part of the project.

Your Community Champion whose area of expertise is your identified SDG will visit your school. Resource materials and internet research will also provide opportunities for student learning and inspiration.

Student understandings must be apparent in the artwork. Consideration of purpose and suitability must occur when planning and preparing the artwork for presentation to a wide audience. See judging rubric document on [THIS PAGE](#).

A major ingredient to produce your Koala artwork is teamwork. Working co-operatively, getting along, listening to other points of view and sharing ideas will all lead to a rich learning experience for all, and a significant contribution to the Sustainable Australia message.

Please note your artwork central theme must relate to the following 8 Kreative Koalas' Sustainable Development Goals.

The Sustainable Development Goals are:

- SDG 2 Zero Hunger
- SDG 6 Clean Water and Sanitation
- SDG 7 Affordable Clean Energy
- SDG 11 Sustainable Cities and Communities
- SDG 12 Responsible Production and Consumption
- SDG 13 Climate Action
- SDG 14 Life Below the Water
- SDG 15 Life on the Land

2. ARTWORK ANALYSIS

You will be provided with an artwork analysis template which will invite you in two pages or less to share with the artwork judges your artwork:

- Theme
- Concept
- Stylistic influences and
- What makes your Koala unique

3. DIGITAL LEARNING JOURNEY JOURNAL

Creating your artwork will be the final act in a process that involves planning, teamwork, learning about your identified Sustainable Development Goal/s and the recording of the process in a digital learning journey journal using digital photography, student reflective writing through blogging, or creating animations or infographics. Your digital learning journey journal can take any format you like as long as it can be loaded on the web. For example, it can be a digital book, or an animation, or an infographic, anything that your students identify that draws on their collective expertise as long as it meets the criteria. See judging rubric document on [THIS PAGE](#).

PS. DON'T FORGET TO GIVE YOUR KOALA A CATCHY NAME THAT REFLECTS YOUR ALLOCATED SDG!

MODULE 2: COMMUNITY PROJECT

For this module, there are two elements to submit

1. DESIGN AND DELIVERY OF COMMUNITY PROJECT

Your school will design and deliver a community sustainability project which will either be delivered in-school or out in the community.

Your Community Champion will be there to help you get the best outcomes possible.

This is ideally linked to one of your identified SDGs (note your project may reflect an alternate SDG to your artwork) and aims to involve a broader audience to get involved and act on a sustainability issue.

The community project is all about giving students the skills they need to drive the change they want to see.

It is turning an idea into action which can have ripple effects through your community.

Learning to take action that will result in people living more sustainably is the central learning, as the acquisition of knowledge and skill has little meaning if it does not lead to effective action.

Some ideas of global and local community projects will be shared throughout the duration of the program through visits with your Community Champions, as well as examples profiled on our website.

WHAT WILL BE MEASURED?

The execution of your sustainability action plan:

- Making a case for change
- Defining the scope for action
- Developing a proposal for action
- Implementing the proposal
- Evaluating and reflecting

See judging rubric document on [THIS PAGE](#).

The sustainability action process involves:

- **Making a case for change**—exploring a Sustainable Development Global issue, assessing the current situation, investigating sustainability concepts and ideas, and stating a case for change;
- **Defining the scope for action**—exploring options for making a change, identifying available resources and constraints, seeking consensus, and developing a statement of the agreed direction for action;
- **Developing a proposal for action**—generating and selecting ideas, developing and modifying these to make them ready for implementation, and preparing, communicating and agreeing upon the proposal;
- **Implementing the proposal**—turning the proposal into action;
- **Evaluating and reflecting**—assessing the degree of success of the action and the efficiency of the processes used, identifying possible future directions and the learning that has resulted from the action.

Visit NSW Curriculum Sustainability Framework for support and to find learning resources for Years 3 to 6 [HERE](#).

Please note your artwork central theme must relate to the following 8 Kreative Koalas' Sustainable Development Goals.

The Sustainable Development Goals are:

- SDG 2 Zero Hunger
- SDG 6 Clean Water and Sanitation
- SDG 7 Affordable Clean Energy
- SDG 11 Sustainable Cities and Communities
- SDG 12 Responsible Production and Consumption
- SDG 13 Climate Action
- SDG 14 Life Below the Water
- SDG 15 Life on the Land

2. COMMUNITY PROJECT REPORT

This involves submission of a six page or less report of your community project outcomes including

1. Project big idea
2. What happened
3. How you defined success
4. What was excellent, unfortunate, or surprising.
5. Pictures that showcase the project journey

CELEBRATION & RECOGNITION AWARDS AND EXHIBITION DAY

THE AWARDS AND EXHIBITION DAY WILL BE HELD ON A DATE TBC.

PRIZES WILL BE AWARDED IN THE FOLLOWING CATEGORIES:

GRAND CHAMPION KOALA ARTWORK - \$500

GRAND CHAMPION COMMUNITY PROJECT FOR CHANGE - \$500

BEST DIGITAL LEARNING JOURNAL - \$200

BEST ANIMATION - \$200



KOALAS ON PUBLIC DISPLAY

A PUBLIC EXHIBITION (WHERE POSSIBLE) IS PLANNED TO COINCIDE WITH JUDGING DAY.

Please note: Each Koala artwork will be displayed with an artwork analysis to be submitted with the Kreative Koala Prize entry. This is a summary of what the artwork represents and how it links to the Sustainability Development Goal your students have featured.

INFORMATION

FOR MORE INFORMATION
PLEASE CONTACT:

LYNNE STRONG

Program Director

PO Box 241

Jamberoo NSW 2533

Mobile: 0407 740 446

Email: headkoala@kreativekoalas.com.au

NEVER DOUBT THAT A SMALL
GROUP OF THOUGHTFUL,
COMMITTED CITIZENS CAN
CHANGE THE WORLD; INDEED, IT'S
THE ONLY THING THAT EVER HAS."

— MARGARET MEAD



「PY」
「IA!」 PICTURE YOU
IN AGRICULTURE